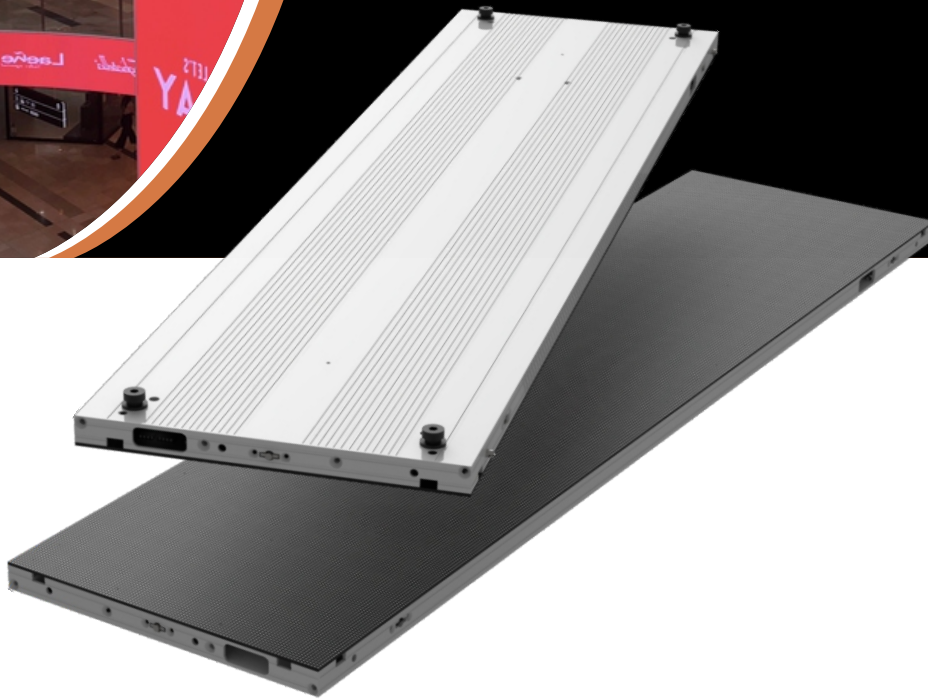


Slim Series

Redefining indoor commercial displays
No limits, No boundaries



Ultra light
and thin



Flexible
splicing



90° corner

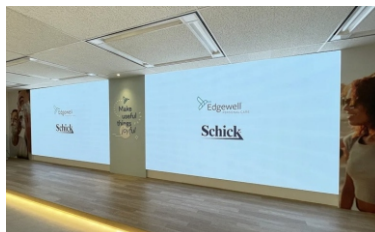


Modular



Innovation
performance

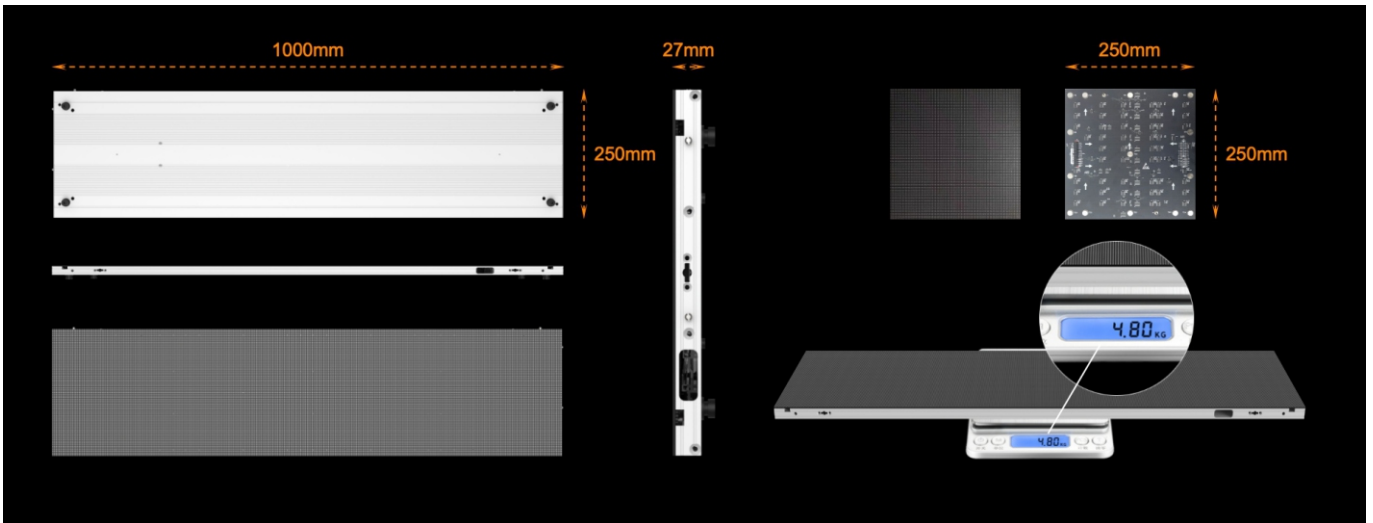
► Various applications



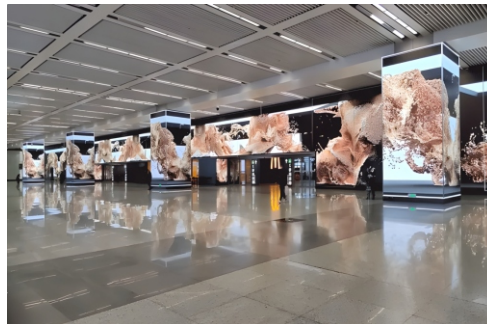
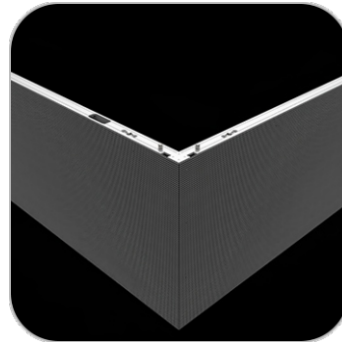
Shopping mall /Retails /Lobby /Airport/ Meeting room

► Design and Maintenance

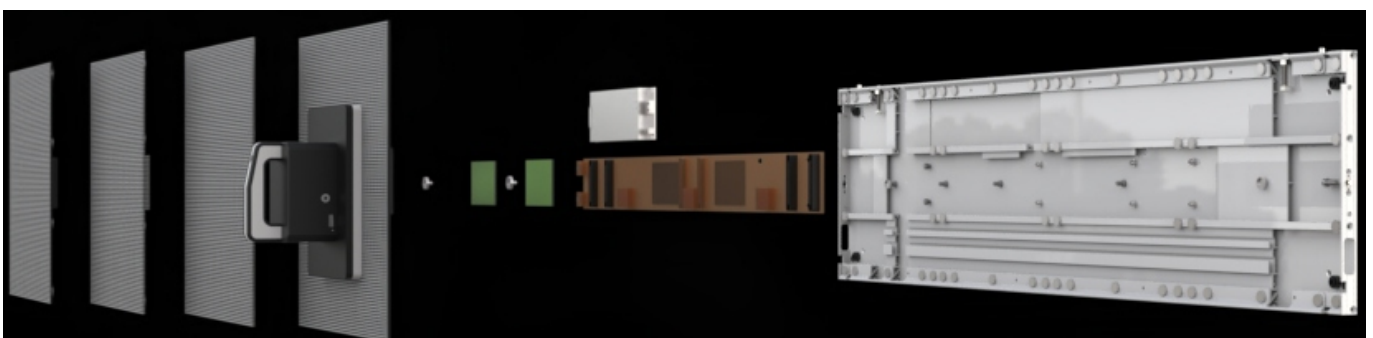
- **Ultra light and thin**



- **Flexible splicing**, discover endless opportunities for your concepts.
Panel size: 1000 x 250mm / 750 x 250mm / 500 x 250mm, rectangular design.



- **Modular technology** – one universal size 250x250mm can match all pixel pitches.
- **Fast and easy maintenance**



► Innovation Performance

- High Brightness and Energy Saver



► Technical Specifications

ITEM	Pixel pitch	P1.5mm	P1.9mm	P2.6mm
Key Function	Technology	Ultra thin, Stretch, 90° cube, Super flat, GOB		
Mechanical	LED Type	SMD1010	SMD1515	SMD2020
	Pixel Density(dot/m ²)	410,913	262,984	147,928
	Module Size (mm)	250 x 250mm		
	Module Resolution (pixels)	160 x 160	128 x 128	96*96
	Panel Size (mm)	1000 x 250 x 27 / 750 x 250 x 27 / 500 x 250 x 27 (W x H x D)		
	Panel Resolution (pixels) (1000x250mm)	640 x 160	512 x 128	384 x 96
	Material	Aluminum profile		
	Panel Weight (KG/pcs)	4.8 / 3.2 / 2.4		
	Maintenance Way	Front	Front	Front
	IP Rating (Front / Rear)	IP40/IP21	IP40/IP21	IP40/IP21
Optical	Brightness (Nits)	600	800	1000
	Refresh Frequency	3840Hz ~7680Hz		
	Contrast Ratio	10000:1		
	Power Consumption (max./avg.)	550W / 185W		
	Grey Level	14 ~ 16bit		
	View Angle (H/V)	160 / 160		
	Working Votage(V)	110-220V, 50-60Hz		
	Color Temperature	6500K ± 500K		
	Certification	ETL/FCC/CE/CCC		

Remarks: The parameters are only for reference. The actual parameters may differ depending on the specific order.

Shenzhen SoStron Technology Co.,Ltd

Building D,Hongfa Science Park(YuepengRoad),2035 Songbai Road, BaoanDistrict,Shenzhen City,China.

Contact us+8675523343844 info@sostron.com www.sostron.com

