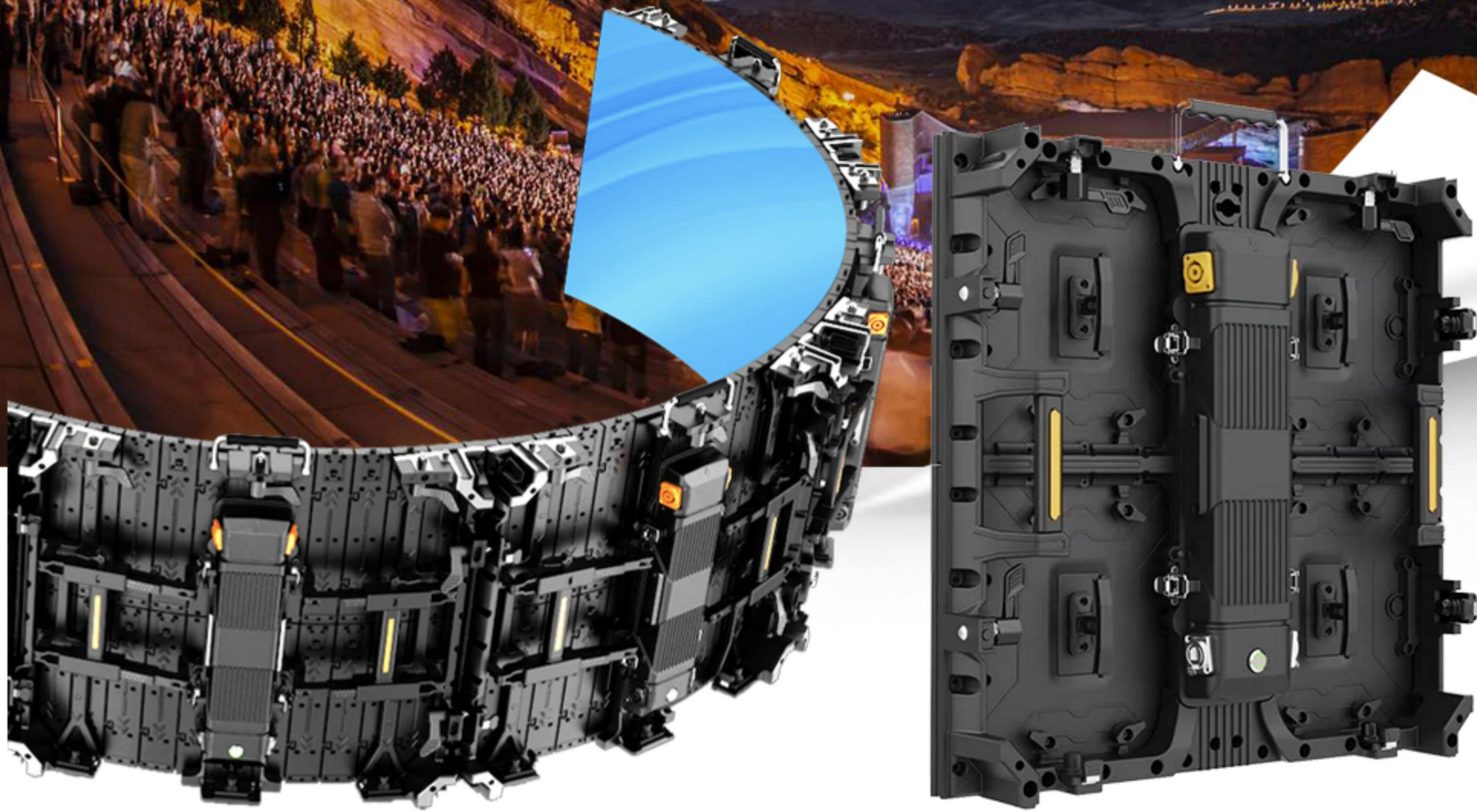


SPad pro2

Folding Arc Rental Solution



Curvable
Creative installation



Fast and Easy
Set-up

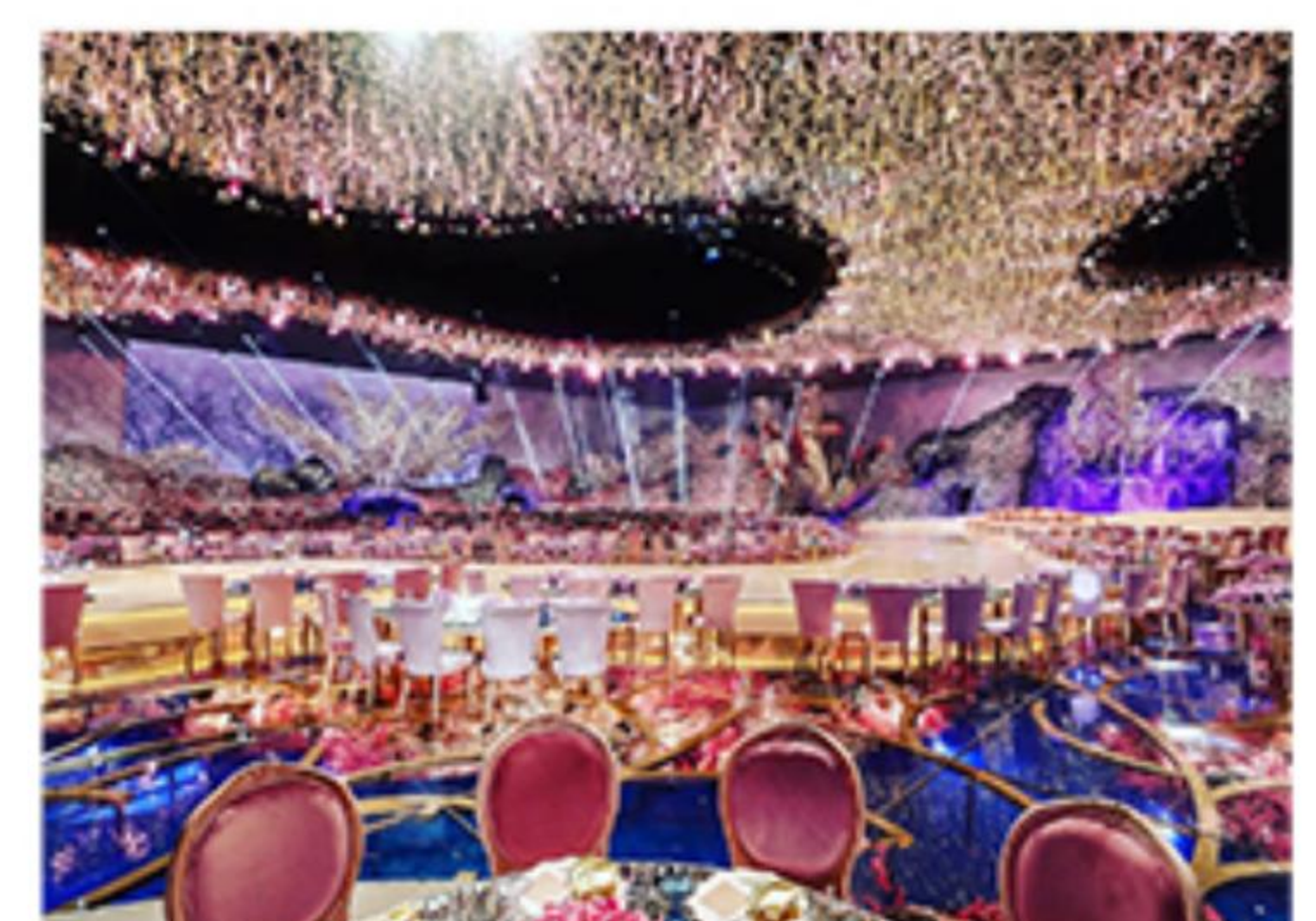
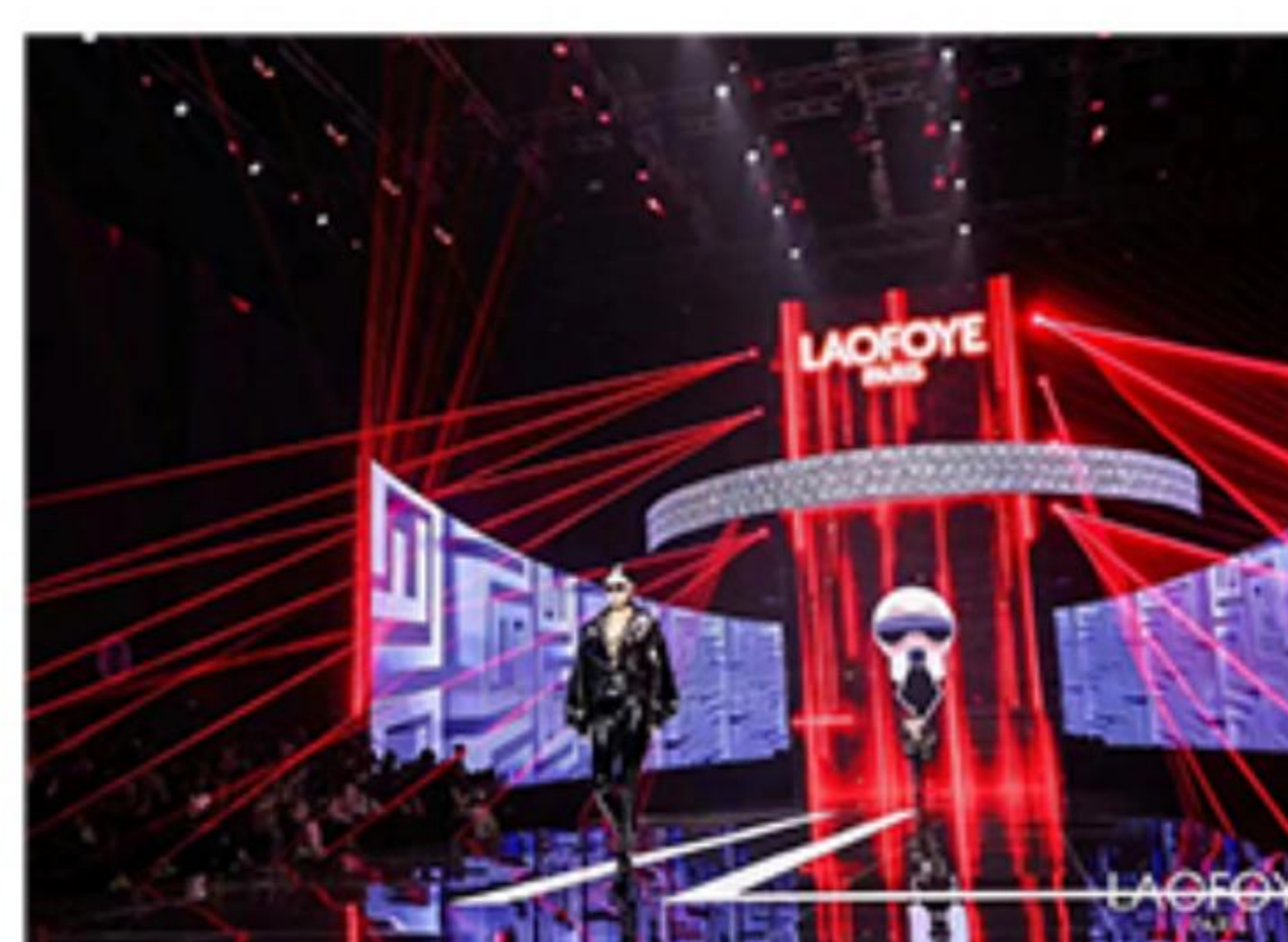


Compatible Splicing



Perfect
video Performance

► Various applications



Festivals/Corporate events/Sports Events/Touring productions/Weddings

Design and Maintenance

New breakthrough in the maximum arc range of a single panel



Perfect curve



Multi-angle



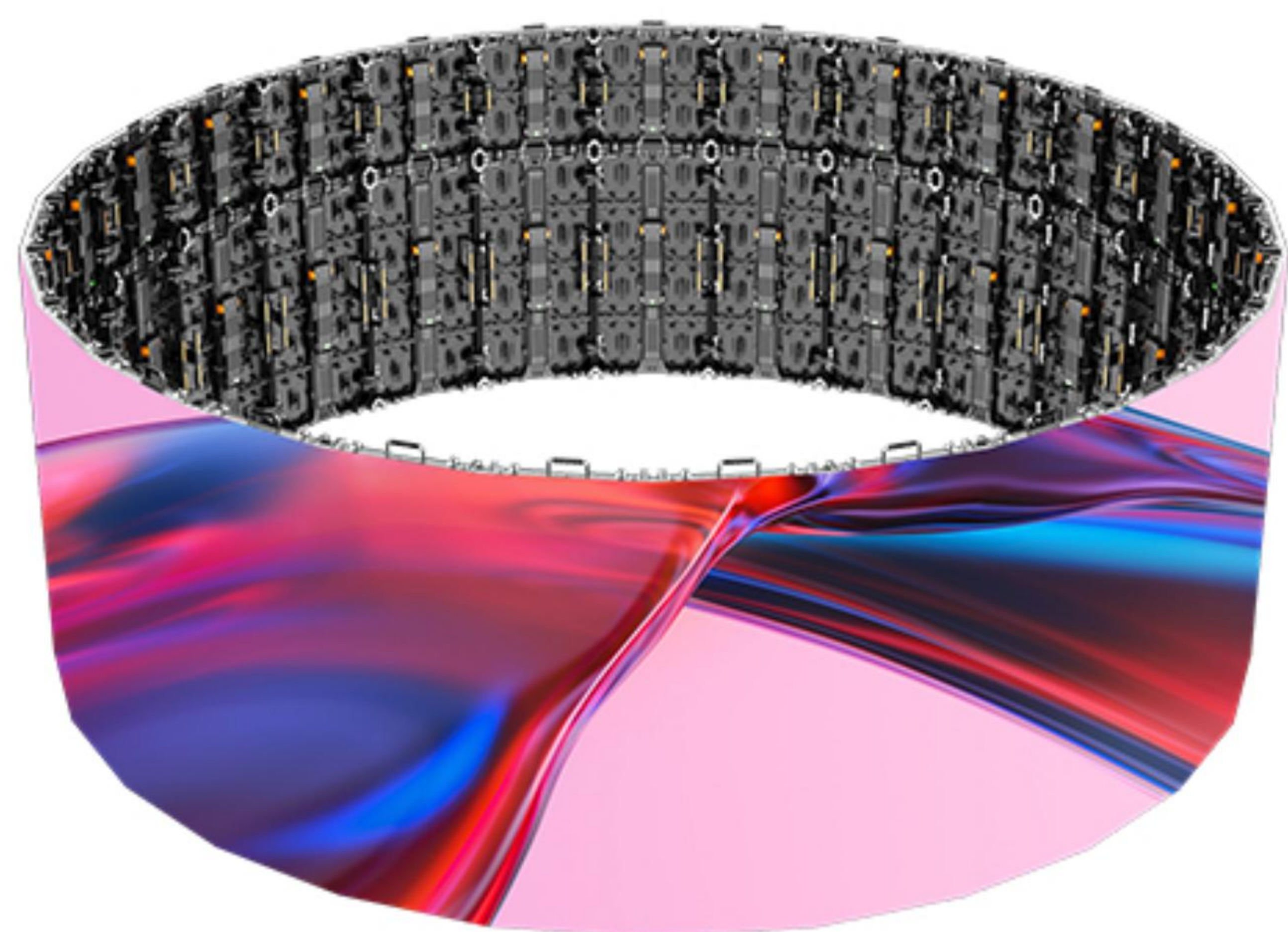
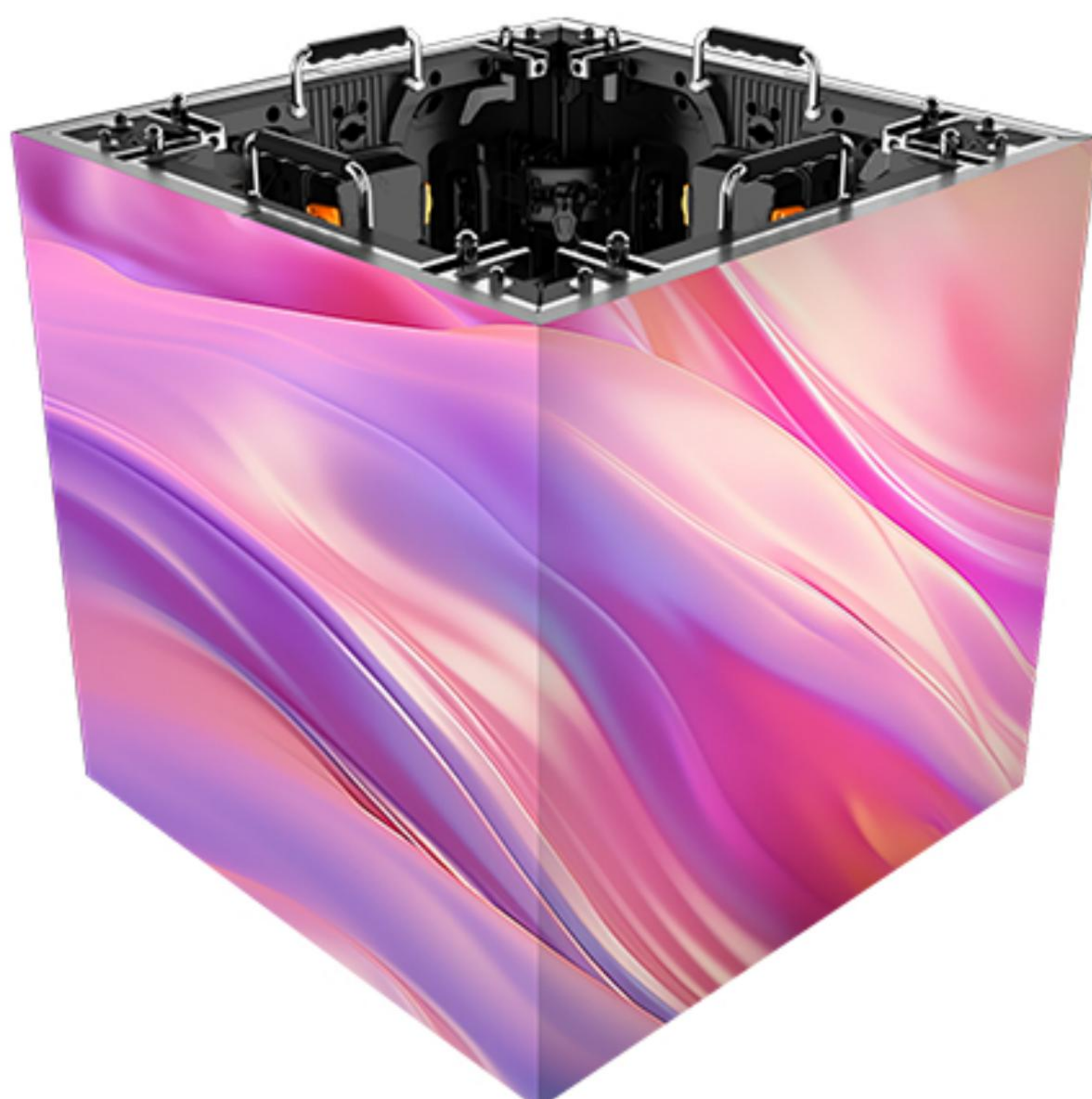
Fast and easy
installation



Compatible splicing

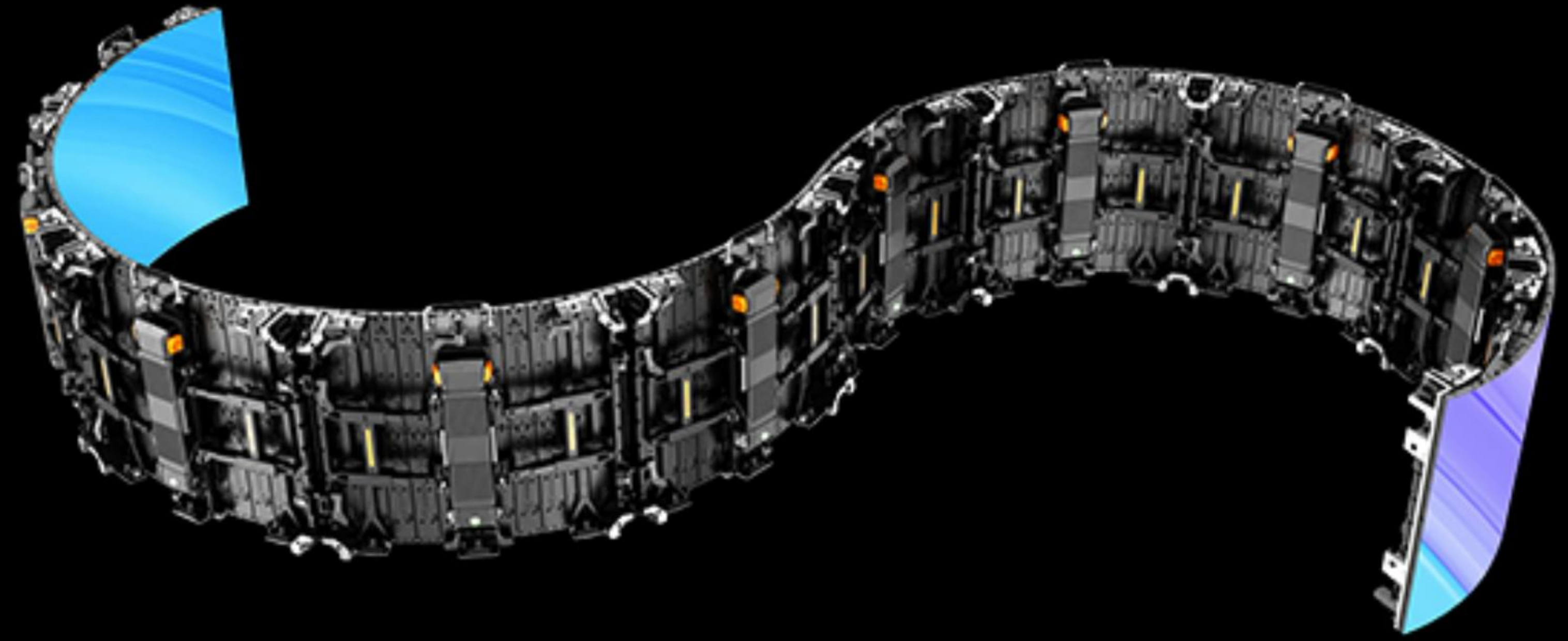
Creative Installation

Only take 8 panels to install round LED column
min diameter is 1.2meters
support multi-angle creative installation



Born For Stage Productions

- Build large LED wall fast & easy
- Compatible splicing solution
Straight and flexible curve can be matched
- Perfect "s" shape



► Technical Specifications

Pixel	P1.9mm	P2.6mm	P2.9mm	P3.9mm	P2.9mm	P3.9mm
LED Type	SMD1515	SMD2020	SMD2020	SMD2020	SMD1415	SMD1921
Pixel Density(dot/m2)	262984	147928	113367	65410	113367	65410
Module Size (mm)	250 x 250	250 x 250	250 x 250	250 x 250	250 x 250	250 x 250
Module Resolution (pixels)	128*128	96*96	84*84	64*64	84*84	64*64
Panel Size (mm)	500 x 500	500 x 500	500 x 500	500 x 500 / 1000	500 x 500	500 x 500 / 1000
Panel Resolution (pixels)	256 x 256	192 x 192	168 x 168	128 x 128 / 256	168 x 168	128 x 128 / 256
Power Consumption(max./avg.)	220W / 500W				240W / 600W	
Material	Die-casting aluminum					
Panel Weight	7.5KG (500x500mm) 12.5KGS (500x1000mm)					
Brightness	800-1000nits (Indoor black leds)				4500 - 5500nits (white leds)	
Brightness	/	/	/	/	3500nits (black leds)	
Grey Level	16bit					
Input(V)	110-220V, 50-60Hz					
Refresh Frequency	7680HZ					
Operating Temperature	-20℃+60℃					
Ingress Protection	IP21				IP65	
Certification	ETL/FCC/CE/CCC					

Shenzhen SoStron Technology Co.,Ltd

Building D, Hongfa Science Park (Yuepeng Road), 2035 Songbai Road, Baoan District, Shenzhen City, China.

Contact us +86 755 2334 3844 info@sostron.com www.sostron.com