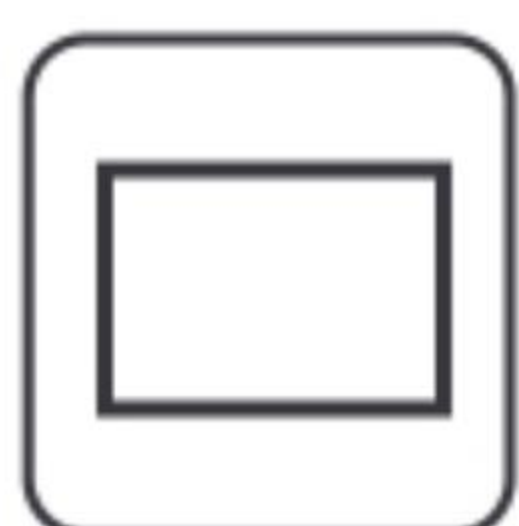


# Storm LED Display

## Outdoor fixed installation products



Product  
stability



Used for more  
than 20 years

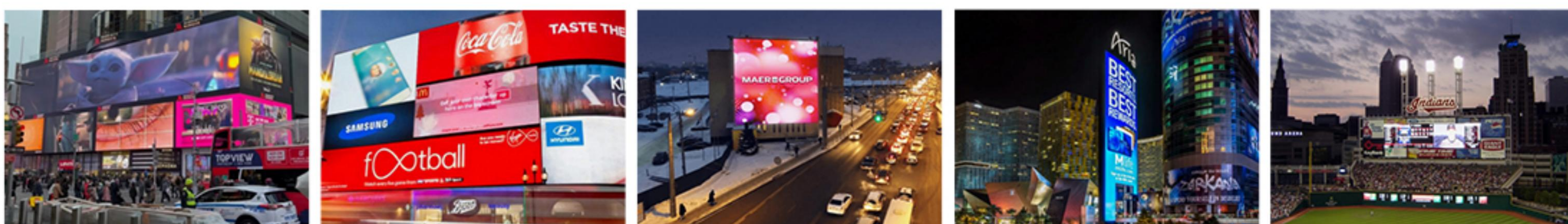


Mass production  
fast delivery



cost-effective

### ► Various applications



Outdoor advertising machine/shopping mall plaza/traffic system/Landmark building/sports



# Design and Maintenance

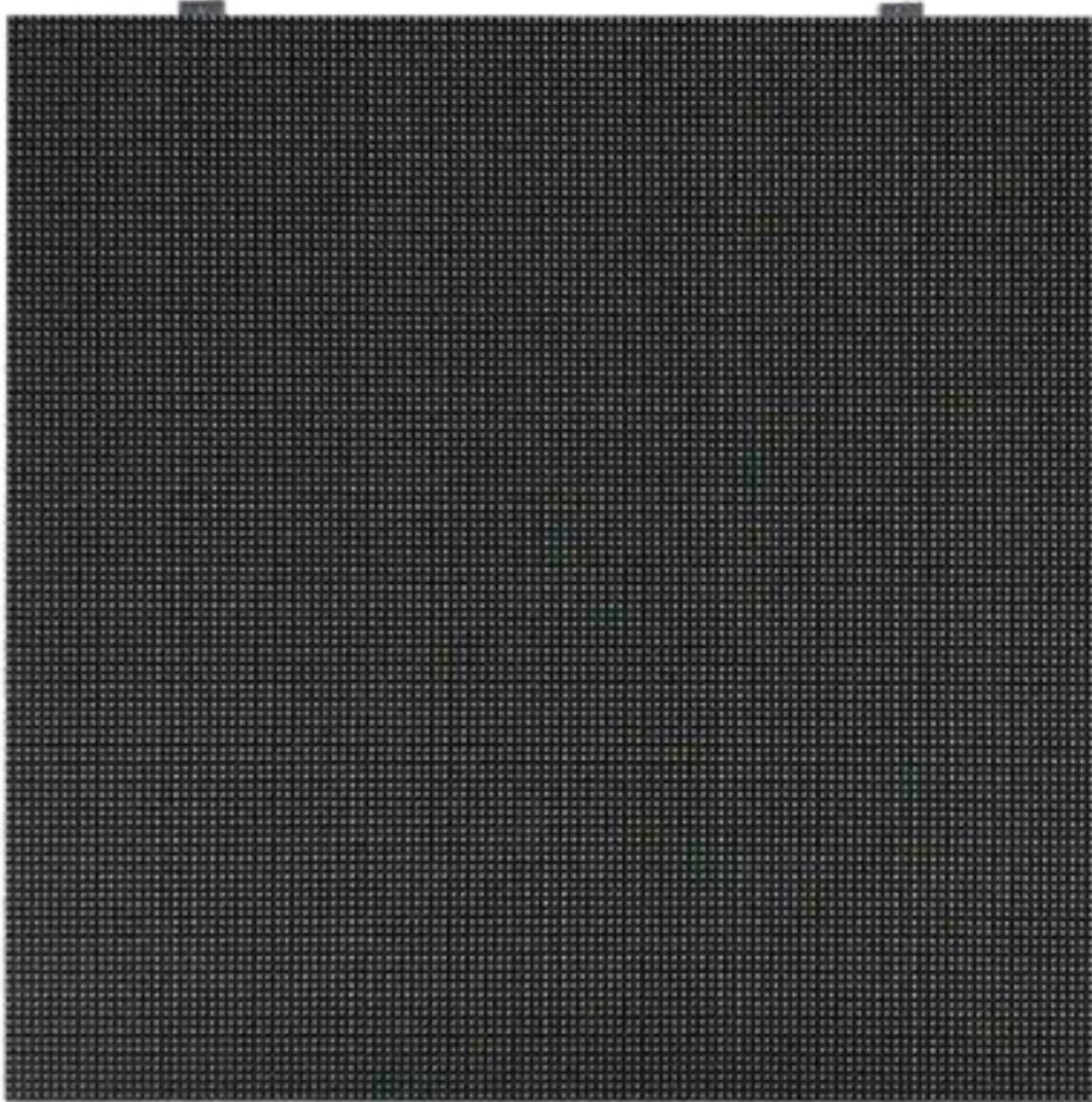
---



20 years high stability



Good heat dissipation



Long service life



Customized panel size

# Stable and Reliable Performance

---





# More functions



With its classic design and stable performance, Storm LED displays have become a leading choice in the market.

## ► Technical Specifications

Pixel pitch	P2.0mm	P3.0mm	P4mm	P5mm	P6.7mm	P8mm	P10mm	P2.9mm	P3.9mm	P4.8mm
LED Type	SMD1212	SMD1415	SMD1921	SMD1921	SMD2727	SMD2727	SMD2727	SMD1415	SMD1921	SMD1921
Pixel Density(dot/m2)	250000	111111	62500	40000	22540	15625	10000	113367	65410	43402
Module Size (mm)	160 x 160	320 x 160mm						250 x 250mm		
Module Resolution (pixels)	80 x 80	104 x 52	80 x 40	64 x 32	48 x 24	40 x 20	32 x 16	84 x 84	64 x 64	52 x 52
Panel Size (mm)	960 x 960	960 x 960/800mm						1000 x 1000mm / 750mm		
Power Consumption (max./avg.)	320W / 780W									
Material	Iron / Aluminum									
Panel Weight	40KG / SQM									
Brightness (nits)	3500	4500	5000	5000	5500	5500	6000	4000	5000	5000
Grey Level	14bit - 16bit									
Input(V)	7680HZ									
Refresh Frequency	3840Hz									
Operating Temperature	-20℃+60℃									
Ingress Protection	IP65									
Life time	100000hours at 50% brightness									
Certification	ETL/FCC/CE/CCC									

**Shenzhen SoStron Technology Co.,Ltd**

Building D, Hongfa Science Park (Yuepeng Road), 2035 Songbai Road, Baoan District, Shenzhen City,China.

Contact us +86 755 2334 3844    [info@sostron.com](mailto:info@sostron.com)    [www.sostron.com](http://www.sostron.com)